

# FOR SALE

## RESIDENTIAL - CONDOMINIUM 700SQFT (65SQM) / CALL FOR PRICE!

+65-62530030



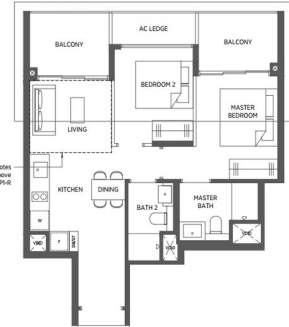
2 - BEDROOM PREMIUM

TYPE BPI 65 sq m | 700 sq ft  
#02-40 to #17-40  
#02-41 to #17-41\*

TYPE BPI-R 72 sq m | 775 sq ft  
#18-40  
#18-41\*

\*Not of Interest (is part of another listing)

Dotted line denotes High ceiling above living for Type BPI-R



### RESIDENTIAL - CONDOMINIUM

PARC ESTA, 902, SIMS AVENUE, EUNOS, GEYLANG,  
PAYA LEBAR, SINGAPORE 408967

- LISTING ID: SGLD81274744
- TENURE: LEASEHOLD 99
- TITLE: N/A
- SIZE BUILT-UP: 700SQFT (65SQM)
- SIZE LAND: N/A
- NO. OF FLOORS: 18
- FLOOR/LEVEL: N/A - MIDDLE FLOOR
- BED ROOMS: 2+1
- BATH ROOMS: 1
- MAIDS ROOMS: N/A
- PARKING SPACES: 1
- LAYOUT TYPE: OTHER
- FACING: N/A
- VIEWING: N/A
- SALES PRICE: **CALL FOR PRICE!**
- COMPLETION YEAR: 2022
- CONDITION: ORIGINAL CONDITION
- FURNISHING: PARTIALLY FURNISHED
- LISTING DATE: FEB 14, 2019

### PARC ESTA

Partially furnished, 2 bedroom, 1 bathroom Condominium for Sale. Completed in 2022, this middle floor unit is in original condition. Others: leasehold 99, 1 other room(s), 1 parking space(s) Located in Singapore's district D14 near Eunos, Geylang, Paya Lebar in the area Eunos (Central region).

### INTERIOR AND FEATURES

- Balcony

### AMENITIES

- 24 Hours Security
- Clubhouse
- Cafe
- Covered Car Park

VISIT THIS PROPERTY AT: <https://www.parc-esta-eunos.sg/property/sgld81274744>

### HUTTONS ASIA PTE LTD

3 Bishan Place #05-01 CPF Bishan Building  
579838, Singapore

+65-62530030

sales@huttonsgroup.com

<https://www.parc-esta-eunos.sg>

**Huttons**  
The Agency of Choice

L3008899K



Scan QR Code

smartrealtor  
property advertising made simple...