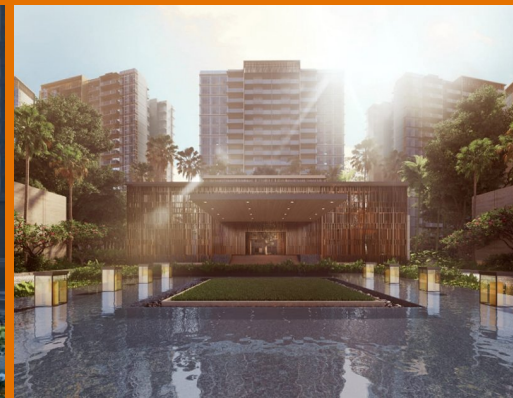


FOR SALE

RESIDENTIAL - CONDOMINIUM
420SQFT (39SQM) / S\$888,000

+65-62530030



2 - BEDROOM PREMIUM

TYPE BPI 65 sq m | 700 sq ft
#02-40 to #17-40
#02-41 to #17-41*

TYPE BPI-R 72 sq m | 775 sq ft
#18-40
#18-41*



RESIDENTIAL - CONDOMINIUM 902-914 SIMS AVENUE, SINGAPORE 400848

- LISTING ID: SGLD41347294
- TENURE: LEASEHOLD 99
- TITLE: N/A
- SIZE BUILT-UP: 420SQFT (39SQM)
- SIZE LAND: N/A
- NO. OF FLOORS: 18
- FLOOR/LEVEL: N/A - MIDDLE FLOOR
- BED ROOMS: 2+1
- BATH ROOMS: 2
- MAIDS ROOMS: N/A
- PARKING SPACES: 1
- LAYOUT TYPE: REGULAR
- FACING: NORTH
- VIEWING: SEA VIEW
- SALES PRICE: S\$888,000 **NEGOTIABLE**
2,114PSF (22,757PSM)
- COMPLETION YEAR: 2022
- CONDITION: ORIGINAL CONDITION
- FURNISHING: UNFURNISHED
- LISTING DATE: NOV 07, 2018

PARC ESTA

Unfurnished, 2 bedroom, 1 bathroom Condominium for Sale. Completed in 2022, this middle floor unit is in original condition. Others: Leasehold 99, swimming pool view, facing north, 1 other room(s), 1 parking space(s) This property is currently vacant and ready to move in. Located in Singapore's district D14 near Eunos, Geylang, Paya Lebar in the area Eunos (Central region).

INTERIOR AND FEATURES

- Air-Conditioning
- Bathtub
- Fiber-Internet
- Balcony
- Cable TV
- Internet Connection

FACILITIES

- Cooker Hob/Hood
- Intercom
- Fridge
- Washing Machine

AMENITIES

- 24 Hours Security
- Cafe
- Barbeque Area
- Clubhouse

VISIT THIS PROPERTY AT: <https://www.propertypages.com.sg/property/sglD41347294>

HUTTONS ASIA PTE LTD

📍 CPF Bishan Building, 3, Bishan Place
Ang Mo Kio, Bishan, Thomson, 579838, Singapore

📞 +65-62530030 ✉ developer.smartrealtor@huttonsgroup.com

🌐 <https://huttonsgroup.com/>



L3008899K



Scan QR Code

smartrealtor®
property advertising made simple...