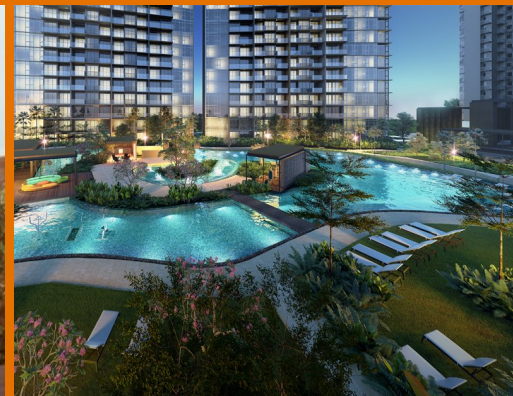
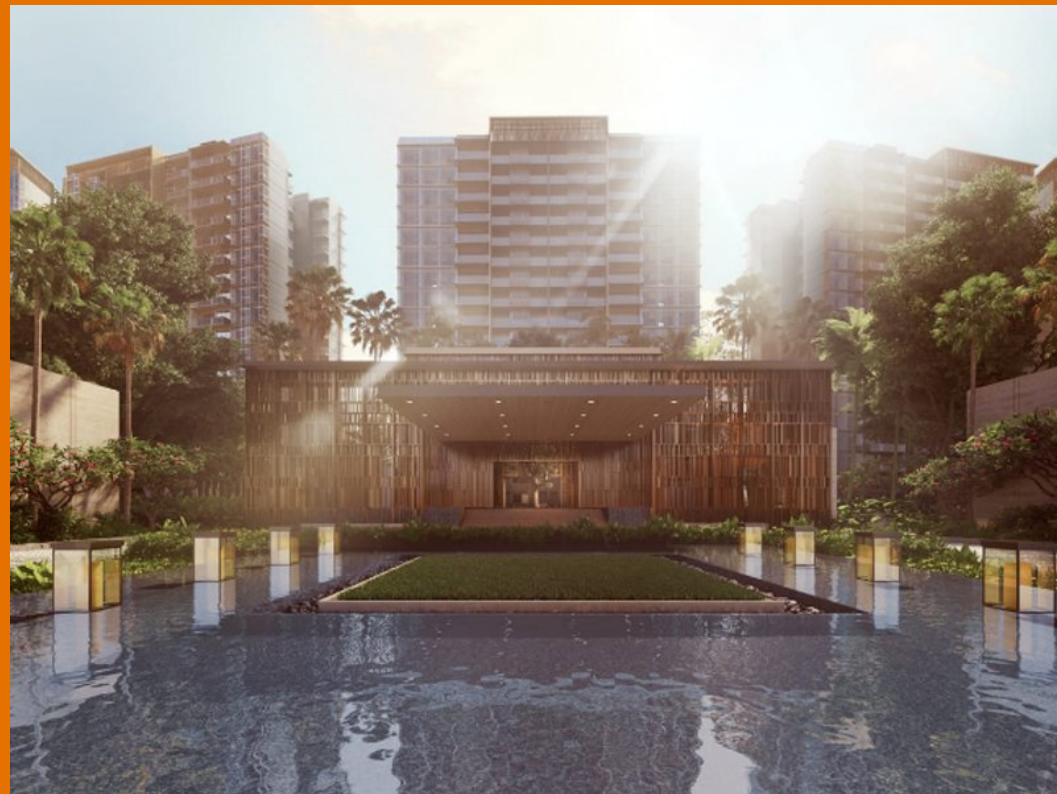


FOR SALE

RESIDENTIAL - CONDOMINIUM 861SQFT (80SQM) / S\$1,148,000

+65-62530030



2 - BEDROOM PREMIUM

TYPE BPI 65 sq m | 700 sq ft
#02-40 to #17-40
#02-41 to #17-41*

TYPE BPI-R 72 sq m | 775 sq ft
#18-40
#18-41*

*Not of Interest (is part of another development)

Dotted line denotes High ceiling above living for Type BPI-R



RESIDENTIAL - CONDOMINIUM 902-914 SIMS AVENUE, SINGAPORE 400848

- LISTING ID: SGLD37547837
- TENURE: LEASEHOLD 99
- TITLE: N/A
- SIZE BUILT-UP: 861SQFT (80SQM)
- SIZE LAND: N/A
- NO. OF FLOORS: 18
- FLOOR/LEVEL: N/A - MIDDLE FLOOR
- BED ROOMS: 2+1
- BATH ROOMS: 2
- MAIDS ROOMS: N/A
- PARKING SPACES: 1
- LAYOUT TYPE: OTHER
- FACING: N/A
- VIEWING: N/A

- SALES PRICE: S\$1,148,000
1,333PSF (14,351PSM)

- COMPLETION YEAR: 2022
- CONDITION: ORIGINAL CONDITION
- FURNISHING: N/A
- LISTING DATE: NOV 12, 2018

PARC ESTA

2 bedroom, 2 bathroom Condominium for Sale. Completed in 2022, this middle floor unit is in original condition. Others: leasehold 99, 1 other room(s), 1 parking space(s) This property will be ready in 2022. Located in Singapore's district D14 near Eunos, Geylang, Paya Lebar in the area Eunos (Central region).

INTERIOR AND FEATURES

- Air-Conditioning
- Bathtub
- Fiber-Internet
- Balcony
- Cable TV
- Internet Connection

FACILITIES

- Cooker Hob/Hood
- Intercom
- Fridge
- Washing Machine

AMENITIES

- 24 Hours Security
- Cafe
- Barbeque Area
- Clubhouse

VISIT THIS PROPERTY AT: <https://www.propertypages.com.sg/property/sglD37547837>

HUTTONS ASIA PTE LTD

📍 CPF Bishan Building, 3, Bishan Place
Ang Mo Kio, Bishan, Thomson, 579838, Singapore

📞 +65-62530030 ✉️ developer.smartrealtor@huttonsgroup.com

🌐 <https://huttonsgroup.com/>



L3008899K



Scan QR Code

smartrealtor®
property advertising made simple...